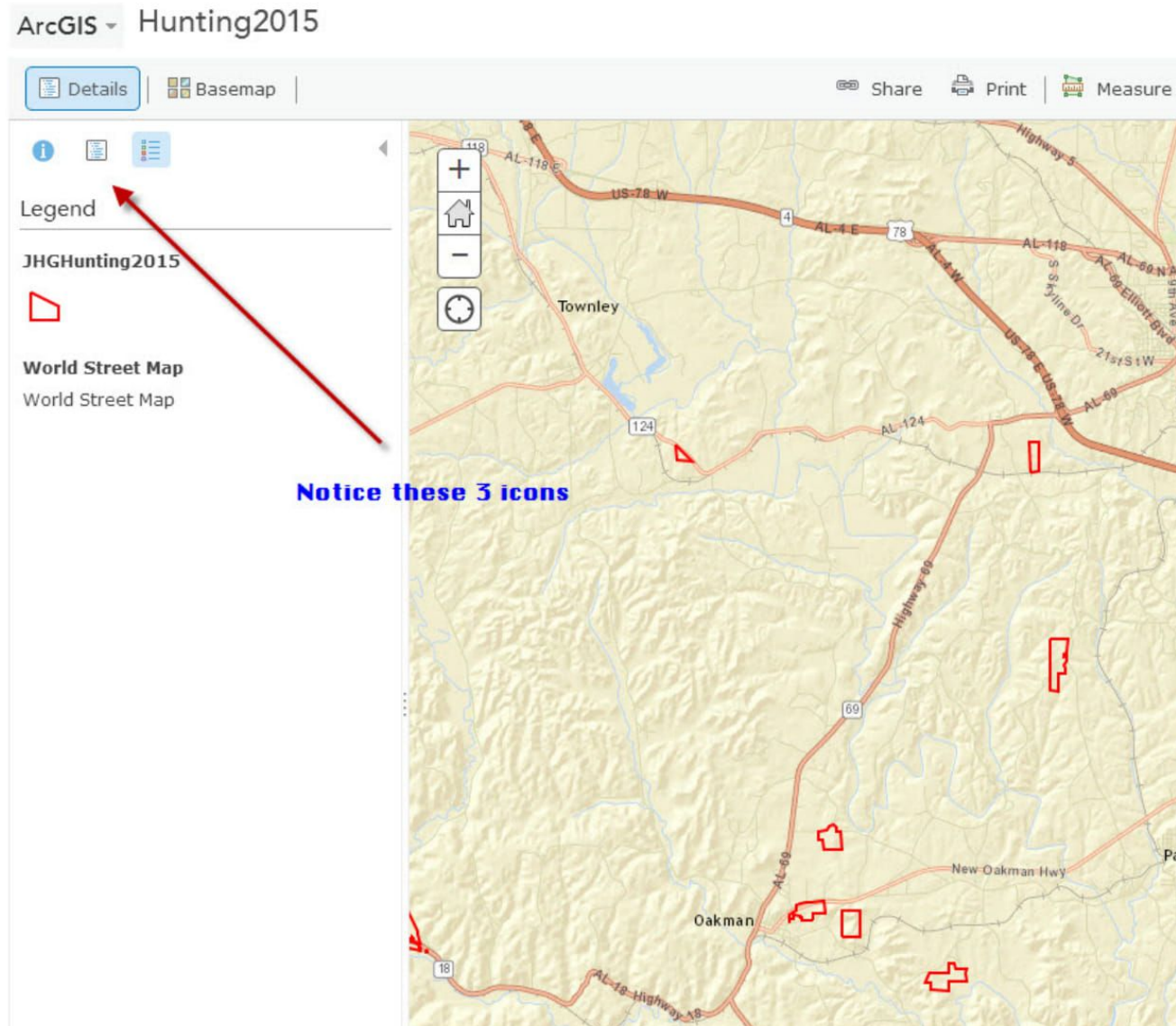


J. H .Graham, Inc.

2020 Hunting Maps

Opening Screen Display



Click middle icon to display layers

ArcGIS - Hunting2015

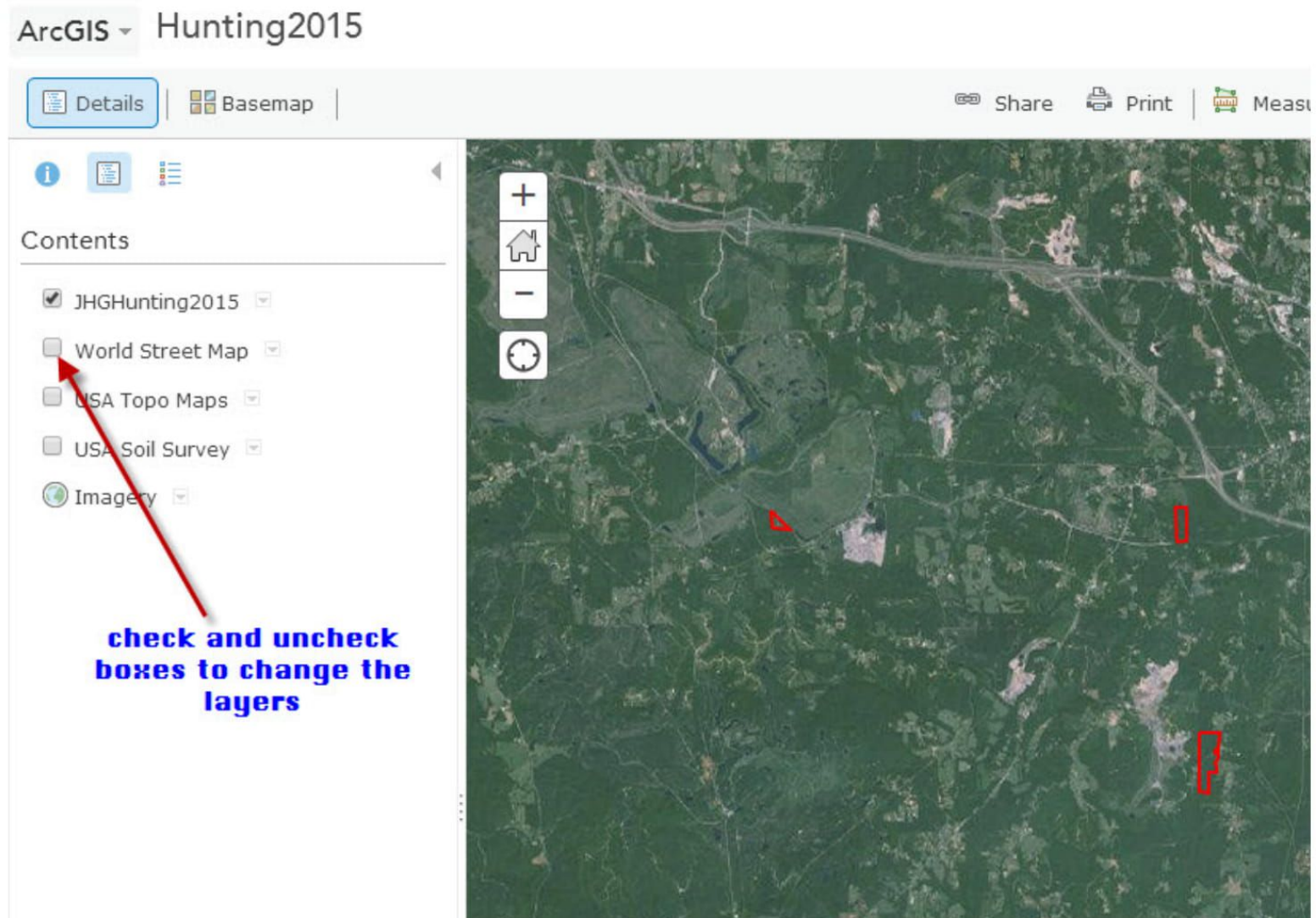
Details | Basemap | Share | Print | Measure | Find address

Contents

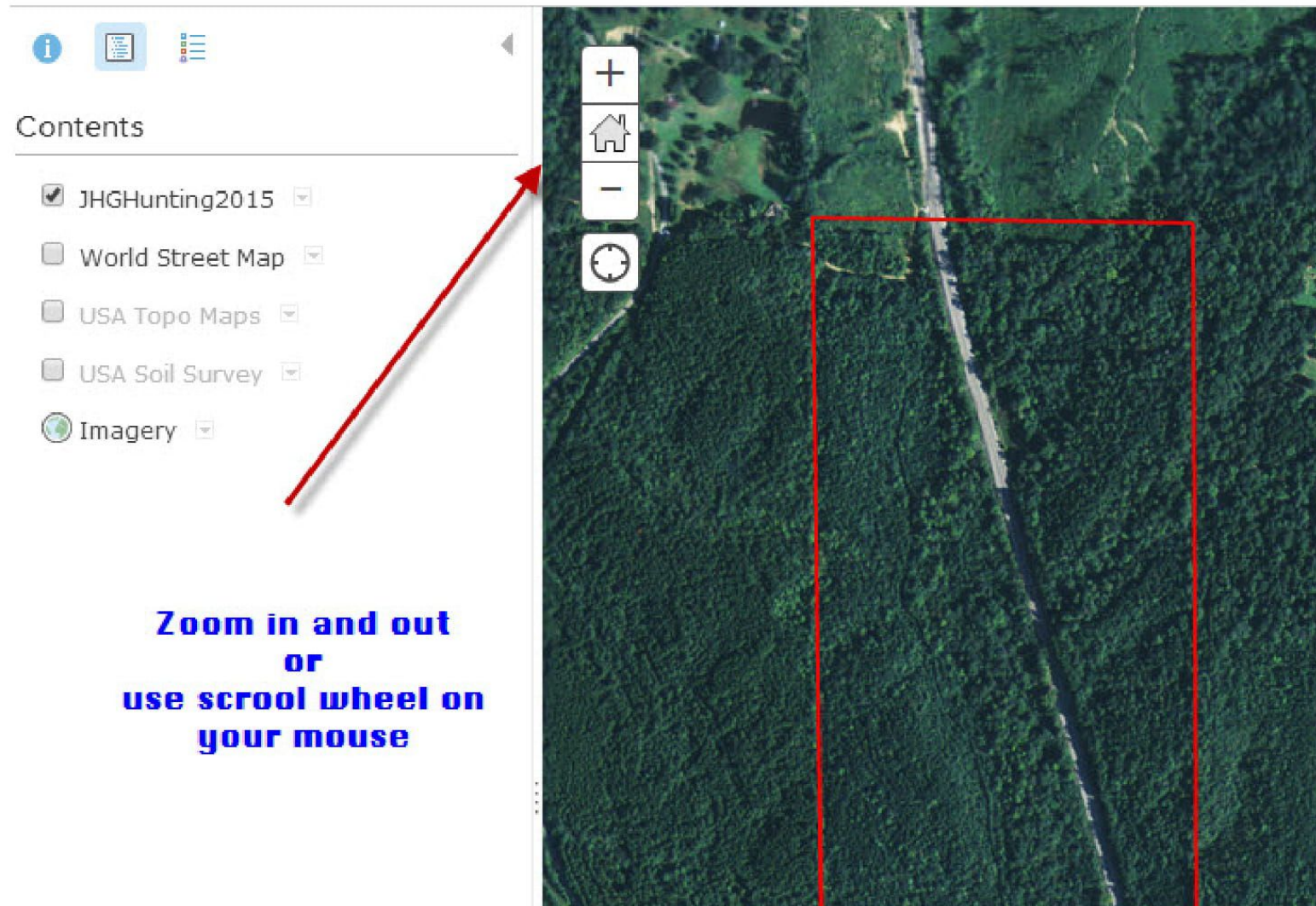
- ☒ JHGHunting2015
- ☒ World Street Map
- ☐ USA Topo Maps
- ☐ USA Soil Survey
- ☐ Imagery

Click the middle icon to change the view. The Layers page is where you control the map backgrounds.

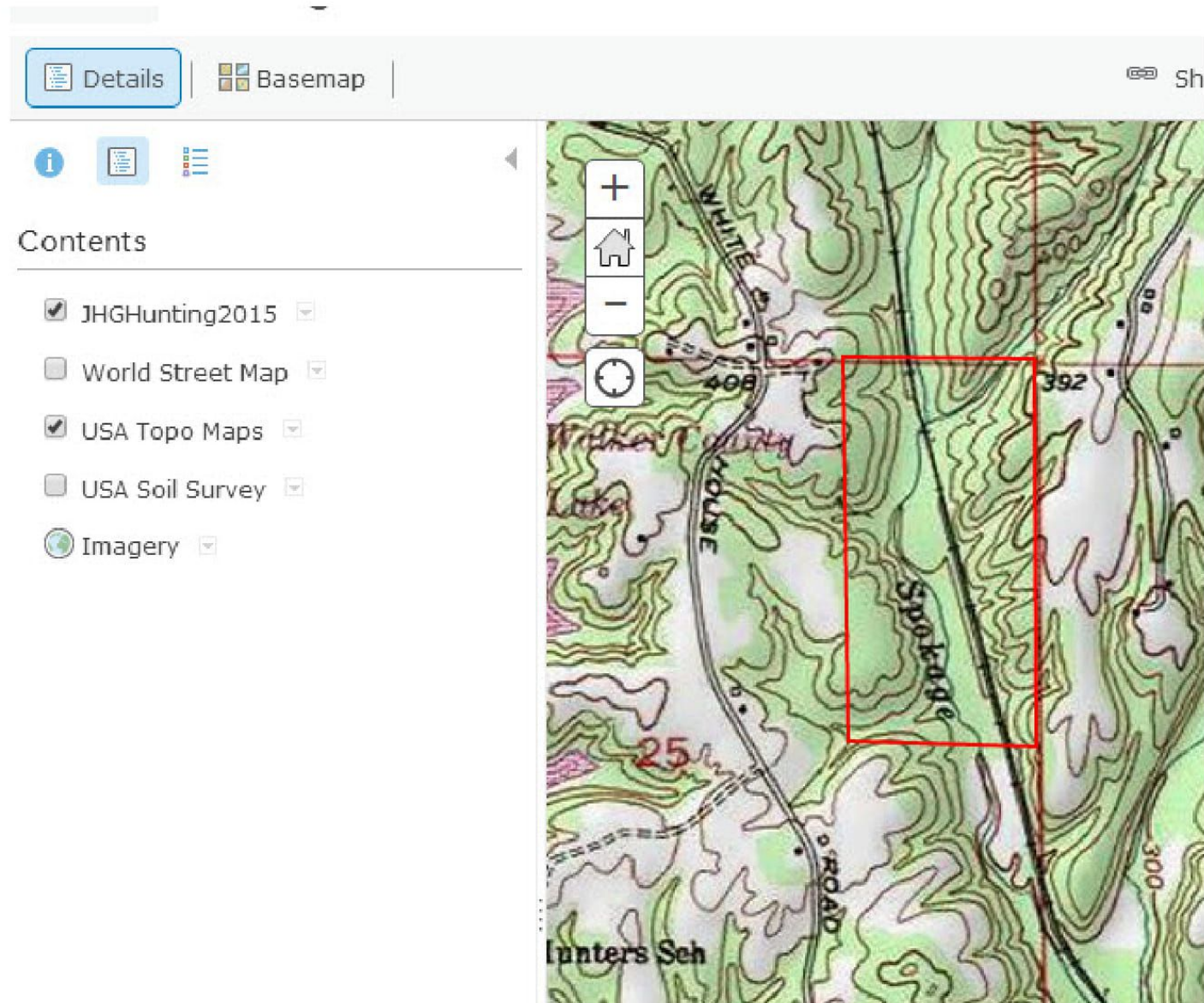
Change layers with a click



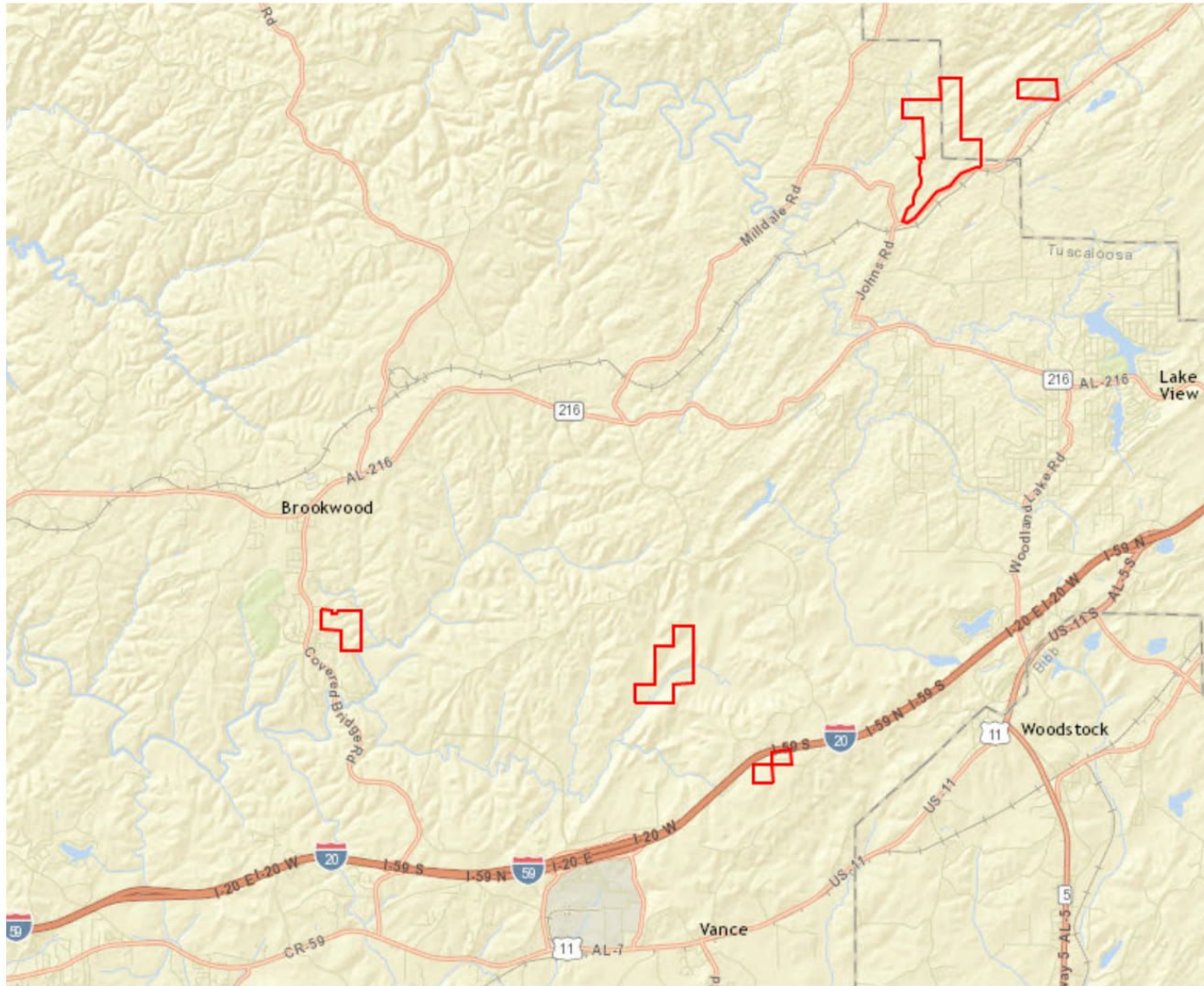
Zoom in and out with + and -



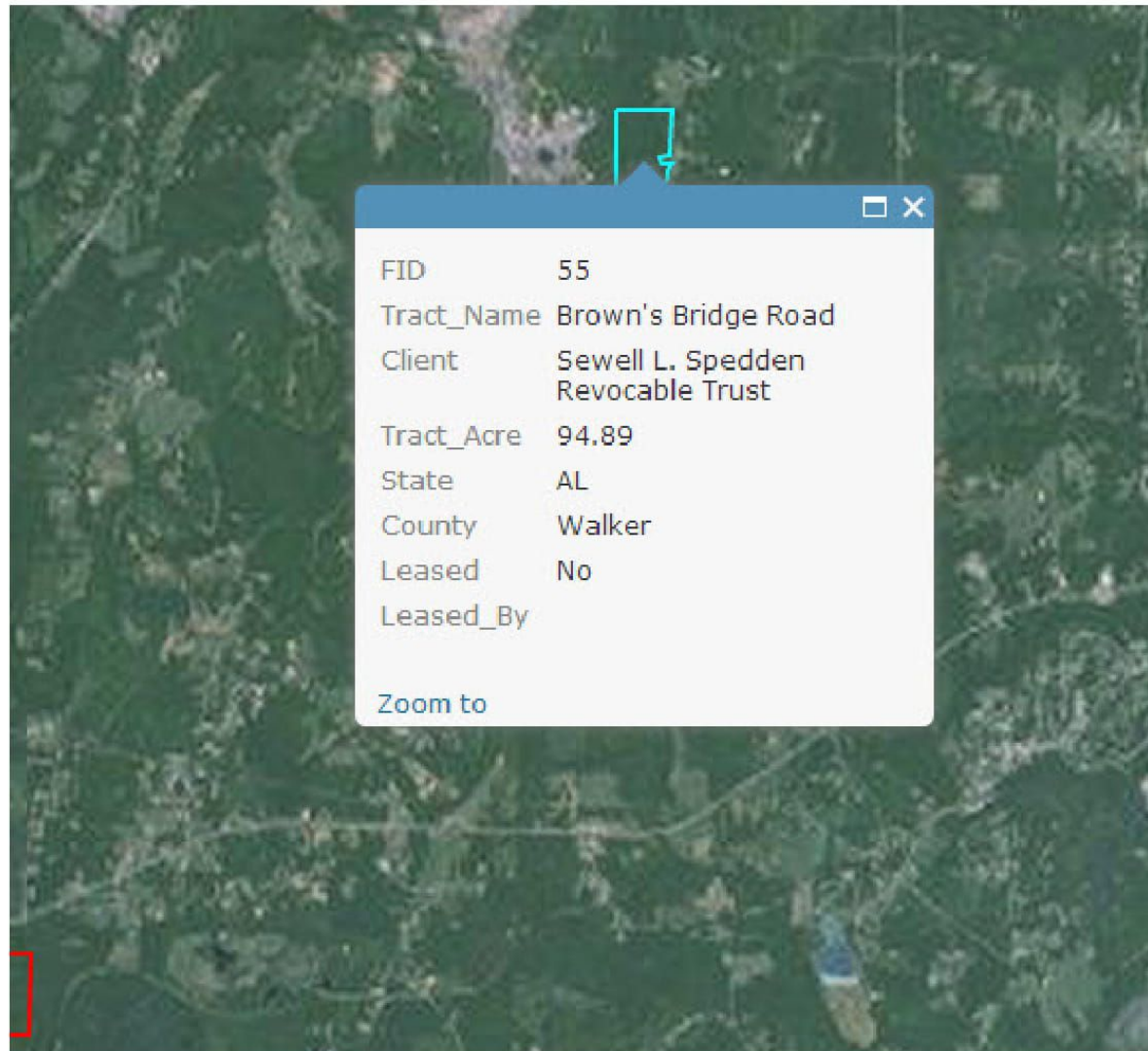
Topographic Map View



Hold left mouse button down and drag
map to new locations



Click inside the Tract to see more information



Printing your Map

ArcGIS ▾ Hunting2015

**To Print your map
Click Here**

Share  Print |  Measure



Contents

- ☒ JHGHunting2015 ▾
- ☐ World Street Map ▾
- ☐ USA Topo Maps ▾
- ☐ USA Soil Survey ▾
- ☐ Imagery ▾



This shows up in a new tab

Hold down Ctrl and hit P to Print

Hunting2015



Source: USDA Natural Resources Conservation Service | Copyright:© 2013 National Geographic Society, i-cubed | City of Tuscaloosa, Esri, HERE, DeLorme, USGS, EPA, USDA | DigitalGlobe, GeoEye, Microsoft, USDA FSA, CNES/Airbus DS

Notes

Zooming out or in too far can cause the tracts to disappear

The zoomed out imagery was taken in the summer

If you zoom in far enough the imagery changes to winter photos

On winter photography the green you see is pine trees and the gray is hardwood trees

These photos are 2-3 years old, actual conditions could differ

In the fall of 2015 we are putting on a Map Reading Class that will include training for
ArcGis Online

To check on tract availability and/or to lease one of these tracts call

Natalie Johnson

205 221-7999

Office Hours 8-4