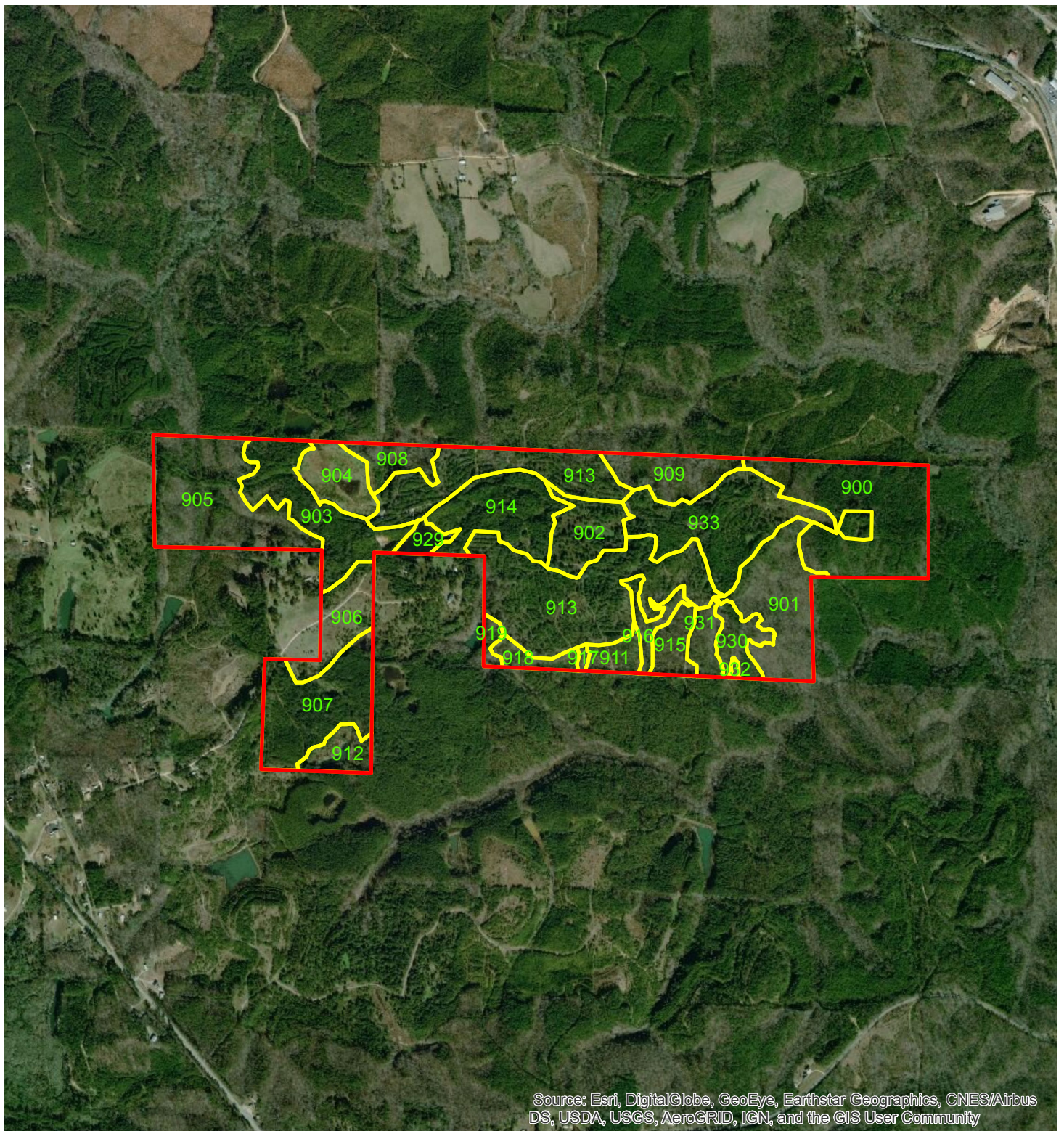


Cross Roads North Tract Winston County, AL +/- 460 Acres





Cross Roads North Tract
Winston County, AL
+/- 460 Acres



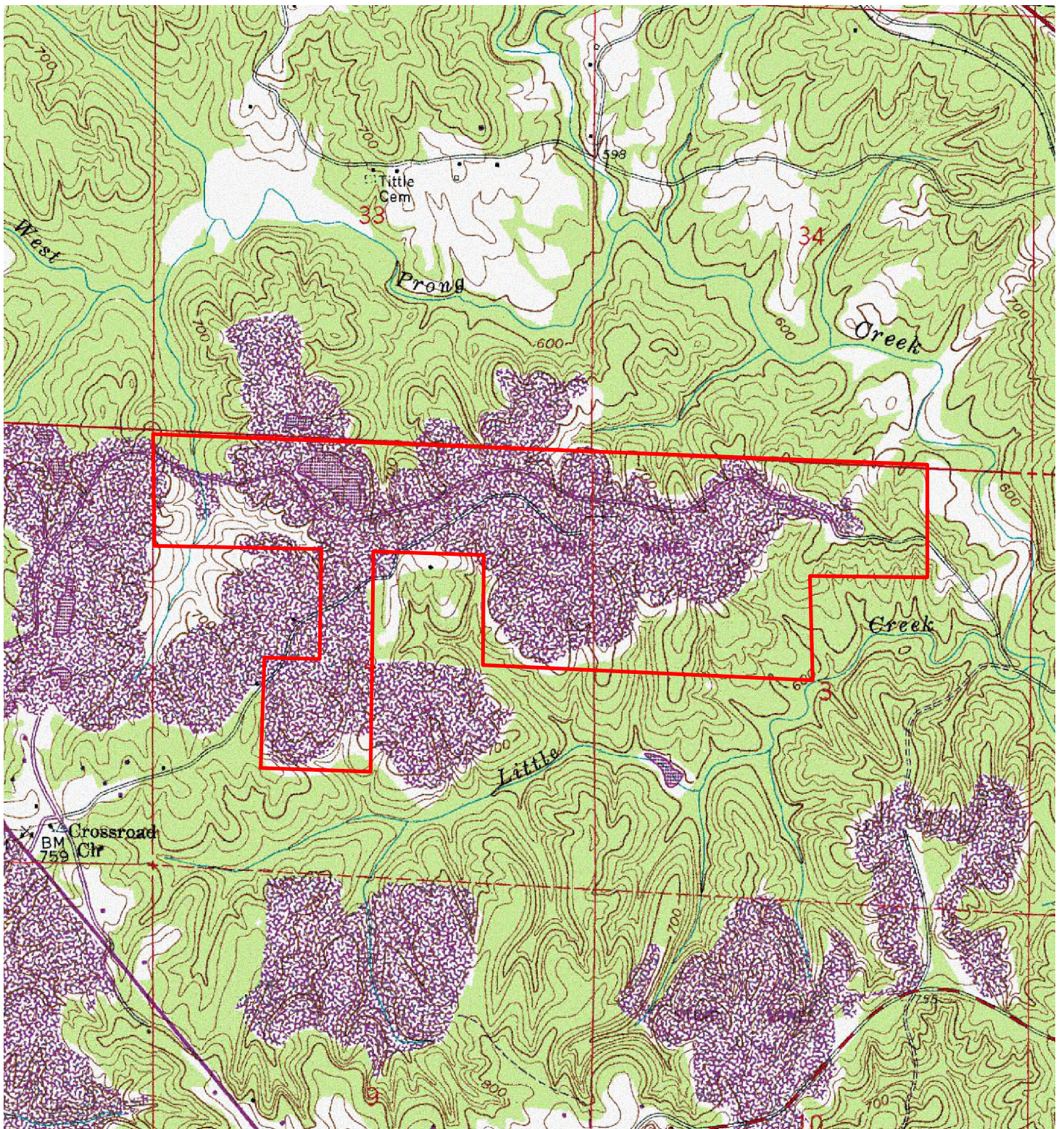
TRACT_NO	COMP_NO	STAND_NO	St_Origin	Landtype	Domspecies	Yearorigin	Thinned	GIS_Acres	Stand_Desc	Site_Prepa	Gen_Seedli
67-2	67	900	P	U	LB	2019		36.8	PULB-19		3rd
67-2	67	901	N	U	PH	1990		38.1	NUPH-90		
67-2	67	902	M	R	O	1988		13.6	MRO-88		
67-2	67	903	M	R	CO	2021		29.1	CO-21		
67-2	67	904	M	R	LB	2010		13.2	MRLB-10		2nd
67-2	67	905	N	U	PH	1990		38.9	NUPH-90		
67-2	67	906	M	R	O	1980		14.8	Open		
67-2	67	907	M	R	LB	2004	2021	31.7	MRLB-04	Yes	2nd
67-2	67	908	N	S	PH	1990		11.8	NSPH-90		
67-2	67	909	N	S	PH	1990		17.4	NSPH-90		
67-2	67	910	N	S	PH	1980		6.3	NSPH-80		
67-2	67	911	P	U	LB	2009		5.5	PULB-09		2nd
67-2	67	912	M	R	O	1980		8.0	MRO		
67-2	67	913	M	R	LB	2009		73.6	MRLB-09		
67-2	67	914	M	R	LB	2005	2021	26.4	MRLB-05		
67-2	67	915	P	U	LB	2009		7.8	PULB-09		2nd
67-2	67	916	N	Z	PH	1990		5.9	NZPH-90		
67-2	67	917	N	Z	PH	1990		0.8	NZPH-90		
67-2	67	918	P	U	LB	2009		4.9	PULB-09		2nd
67-2	67	919	N	S	PH	1990		2.4	IO		
67-2	67	920	M	R	LB	2004	2021	1.9	MRLB-00		
67-2	67	921	M	U	PH	1990		7.0	IO		
67-2	67	929	M	R	BP			3.8	Beaver Pond		
67-2	67	930	P	U	LB	2019		8.6	PULB-19		3RD
67-2	67	931	N	Z	PH	1990		6.3	NUPH-90		
67-2	67	932	N	Z	PH	1990		0.5	NUPH-90		
67-2	67	933	M	R	LB	2019		36.3	MRLB-19		3rd
67-2	67	934	N	S	LB	1995		2.6	NSLB-95		Natural

P-Planted
N - Natural
M-Strip Mined

U-Upland
S-Slope
R-Reclaimed
Z-SMZ

LB-Loblolly
PH-Pine / Hardwood
O-Open
CO-cutover

IO-Inoperable



Cross Roads North Tract
Winston County, AL
+/- 460 Acres

